

PART OF THE SW 1/4 OF SECTION 5, THE NE 1/4 OF SECTION 7,  
AND THE NW 1/4 OF SECTION 8, ALL IN T.6N., R.2E., S.L.B. & M.

MIDDLE FORK MEADOWS SUB PHASE 1

TAXING UNIT: 318

IN WEBER COUNTY

SCALE 1" = 200'

SEE PAGE 3

SEE PAGE 6

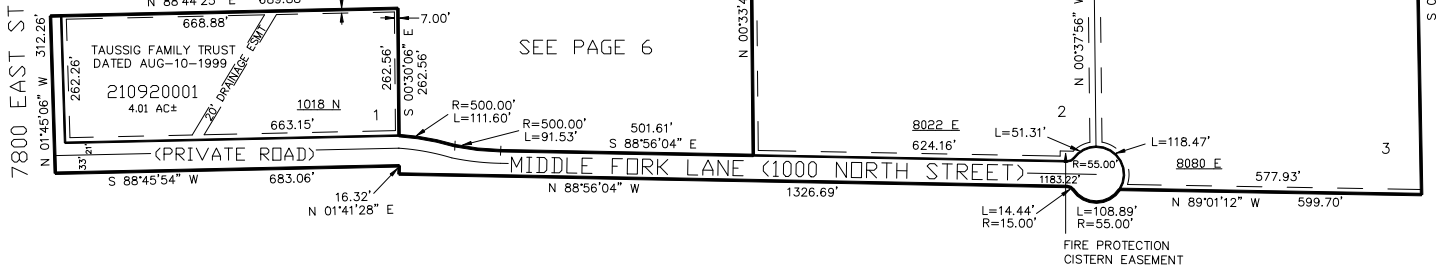
SEE PAGE 10

SEE PAGE 6

SEE PAGE 10

SEE PAGE 62

7800 EAST ST



SEE PAGE 62

SEE PAGE 10